

Undergraduate International Students



A World-Class University With Worldwide Impact

buffalo.edu/ApplyUB

UB
University at Buffalo
The State University of New York



No. 1
Public University in New York State
(U.S. NEWS & WORLD REPORT RANKING, 2020)

More choices. More challenges. More life-changing experiences. At UB—a top 35 public research university and No. 1 in New York—you'll find 450+ programs, globally renowned faculty and a diverse environment that prepares you for a lifetime of success no matter what path you choose.



1 hour by plane to New York City, Boston and Washington, D.C.

90 minutes by car to Toronto

20 minutes by car to world-famous Niagara Falls



Undergraduate Degrees

Learn about courses, faculty, special academic opportunities, career options and more: catalog.buffalo.edu



- * Concentration
- † Also available as combined 3+3 accelerated bachelor's and law (JD) degrees
- ‡ Specialization track
- § Occupational therapy is a five-year BS/MS combined degree program
- ** Pharmacy is a six-year PharmD program
- †† Physical therapy is a six-year advanced degree program; freshmen and transfers should major in exercise science to prepare for this professional physical therapy degree



ALL STUDENTS, FROM THEIR VERY FIRST YEAR, CAN PARTICIPATE IN RESEARCH, SERVICE OR EXPERIENTIAL LEARNING

UNDERGRADUATE INFORMATION

University at Buffalo
411 Capen Hall
Buffalo, NY 14260-1604
USA

Telephone: +1 (716) 645-2368
Facsimile: +1 (716) 645-2528
Email: intiem@buffalo.edu
Website: buffalo.edu/ApplyUB

ACCOUNTING BS, BS/MS
AFRICAN-AMERICAN STUDIES BA
AMERICAN STUDIES BA
ANTHROPOLOGY BA
ARCHITECTURE BS
ART BA (STUDIO ART)
 General Studio*
 Graphic Design*
 Photography*
ART BFA (FINE ARTS)
 Emerging Practices*
 General Studio*
 Graphic Design*
 Painting*
 Photography*
 Print Media*
 Sculpture*

ART HISTORY BA
ASIAN STUDIES BA
BIOCHEMISTRY BS
BIOINFORMATICS AND COMPUTATIONAL BIOLOGY BS
 Biological Sciences*
 Biomedical Informatics*
 Computer Science and Engineering*

BIOLOGICAL SCIENCES BA, BA/MS
BIOMEDICAL SCIENCES, BS, BS/PHARM D
BIOTECHNOLOGY BS
BUSINESS ADMINISTRATION BS, BS/MBA
 Data Analytics*
 Financial Analysis*
 General Management*
 Human Resources Management*
 International Business*
 Management Information Systems*
 Marketing*
 Operations and Supply Chain Management*

BUSINESS ADMINISTRATION/FINANCE BS/MS
BUSINESS ADMINISTRATION/MANAGEMENT INFORMATION SYSTEMS BS/MS
CHEMISTRY BA, BS, BA/PHARM D
CLASSICS BA
 Ancient Greek Language and Literatures*
 Ancient History*
 Ancient Latin Language and Literatures*
 Classical Civilizations*
 Mediterranean Archaeology*

COMMUNICATION BA
COMPUTATIONAL PHYSICS BS
COMPUTER SCIENCE BA, BS, BS/MBA
COMPUTER SCIENCE/COMPUTER SCIENCE AND ENGINEERING BS/MS
CRIMINOLOGY BA[†]
DANCE BA, BFA
ECONOMICS BA, BA/MA, BA/MS
ECONOMICS/ECONOMETRICS AND QUANTITATIVE ECONOMICS BA/MS

ENGINEERING:
 Aerospace BS
 Biomedical BS, BS/MBA, BS/MS
 Chemical BS, BS/MBA
 Civil BS, BS/MBA
 Computer BS
 Electrical BS, BS/MBA, BS/MS
 Environmental BS
 Industrial BS, BS/MBA
 Mechanical BS, BS/MBA
ENGINEERING PHYSICS BS
ENGLISH BA[†]
ENVIRONMENTAL DESIGN BA
ENVIRONMENTAL GEOSCIENCES BS
 Ecology and the Environment[†]
 Environmental Monitoring and Analysis[†]
 Water and the Environment[†]
ENVIRONMENTAL STUDIES BS
EXERCISE SCIENCE BS
 Applied Exercise Physiology*
 Health Promotion*
 Pre-Health Professions*

EXERCISE SCIENCE/ATHLETIC TRAINING BS/MS
EXERCISE SCIENCE/EPIDEMIOLOGY BS/MPH
EXERCISE SCIENCE/NUTRITION BS/MS
EXERCISE SCIENCE/PHYSICAL THERAPY BS/DPT
FILM STUDIES BA
FRENCH BA



MOST COMPREHENSIVE CAMPUS IN THE STATE UNIVERSITY OF NEW YORK (SUNY) SYSTEM

GEOGRAPHIC INFORMATION SCIENCE BS
GEOGRAPHY BA
 Earth Systems Science*
 Urban and Regional Analysis*

GEOLOGICAL SCIENCES BA, BS
GERMAN BA
 German Language and Linguistics*

GLOBAL GENDER STUDIES BA
 Cultures and Identities*
 Gender and Public Policy*
 Women and Global Citizenship*

HISTORY BA[†]
INFORMATION TECHNOLOGY AND MANAGEMENT BS
INTERNATIONAL TRADE BA
ITALIAN BA
JEWISH STUDIES BA
LAW BA[†]
LINGUISTICS BA
 Applied Linguistics*
 Chinese Language and Linguistics*
 Japanese Language and Linguistics*
 Korean Language and Linguistics*
 Language and Cognition*
 Language, Society and Communication*

MATHEMATICAL PHYSICS BS
MATHEMATICS BA
 Computing and Applied Mathematics*
 General Curriculum*
 General Study in Applied Mathematics*
 General Study in Mathematics*
 General Study in Mathematics and Education*

MATHEMATICS BS
 Actuarial Science*
 General Study in Applied Mathematics*
 General Study in Mathematics*

MATHEMATICS-ECONOMICS BA
MEDIA STUDY BA
 Critical Studies*
 Production*

MEDICAL TECHNOLOGY BS
MEDICINAL CHEMISTRY BS, BS/MS
MUSIC BA
MUSIC PERFORMANCE MUS.B.
MUSIC THEATRE BFA
NEUROSCIENCE BS
NUCLEAR MEDICINE TECHNOLOGY BS
NURSING BS, BS ACCELERATED FORMAT, RN-BS
OCCUPATIONAL SCIENCE/OCCUPATIONAL THERAPY BS/MS[§]
PHARMACEUTICAL SCIENCES BS, BS/MS, BS/PHARM D
PHARMACOLOGY AND TOXICOLOGY BS, BS/MS
PHARMACY PHARM D**
PHILOSOPHY BA[†]
PHYSICAL THERAPY DPT^{††}
PHYSICS BA
 Teaching of Science Physics*
 Teaching of Science Physics and Chemistry*

PHYSICS BS
POLITICAL SCIENCE BA[†]
 Advanced Political Science*
 American Politics and Public Affairs*
 Comparative Politics*
 General Political Science*
 International Politics*
 Public Law*

PSYCHOLOGY BA, BS
PUBLIC HEALTH BS, BS/MPH
SOCIAL SCIENCES INTERDISCIPLINARY BA
 Cognitive Science*
 Health and Human Services (Community Mental Health Early Childhood Studies, Social Gerontology)*
 International Studies*
 Legal Studies*

SOCIOLOGY BA[†]
SPANISH BA
SPECIAL STUDIES BA, BS
SPEECH AND HEARING SCIENCE BA
STATISTICS BA
THEATRE BA
THEATRE BFA
 Design/Technology*
 Performance*

URBAN AND PUBLIC POLICY STUDIES BA



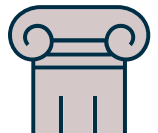
13 SCHOOLS AND COLLEGES, INCLUDING SUNY'S ONLY SCHOOLS OF ARCHITECTURE AND LAW



MORE THAN 200 FACULTY MEMBERS AWARDED THE SUNY CHANCELLOR'S AWARD FOR EXCELLENCE IN TEACHING



LIBRARIES AND SPECIAL COLLECTIONS WITH MORE THAN 3.8 MILLION VOLUMES



FOUNDED IN 1846

Top Rankings



Top 1% in the World

Ranked No. 268 out of 20,000 universities worldwide—CWUR



Top 3% in the Nation

One of only 63 U.S. institutions in the Association of American Universities



Top 25 in the Nation

Among the top 25 U.S. institutions hosting international students—IIE



Top 35 in the Nation

Among the leading research universities in the U.S., spending \$400 million annually

Campus Profile

21,607

UNDERGRADS

14:1

STUDENT-FACULTY RATIO

9,896

GRADS

101

COUNTRIES REPRESENTED ON CAMPUS

WORLD-RENOUNDED FACULTY

Our faculty have won such prestigious awards as:

- Nobel Prize
- Pulitzer Prize
- National Book Award
- National Medal of Science
- National Medal of Technology
- MacArthur Foundation “genius award”
- Guggenheim



Learn from the **BEST TEACHERS** and top innovators in the world



Tuition that's a **FRACTION OF THE COST** of a comparable private university

Life at UB



FOUR-SEASON CLIMATE

Buffalo named to The New York Times' famous “52 Places To Go” list



14 NCAA Division I teams

600+ organizations and clubs for academics, culture and sports

EXCEPTIONAL VALUE

Tuition: \$24,740*

Fees and Health Insurance: \$5,534

Food and Housing: \$15,363

*All figures represent fees for 2019–2020 and are subject to change.

Scholarships:

- Awards typically range from \$1,000 to \$15,000.
- Submission of SAT/ACT scores is highly recommended.
- For best consideration, apply before Dec. 1.
- Last date for consideration is April 15.

SUPERLATIVE FACILITIES

50+ major research centers and institutes focusing on fields such as computational research; bioinformatics and life sciences; lasers, photonics and biophotonics; and geographic information and analysis.

Multimedia instructional spaces, wireless infrastructure, computational research facilities and laboratory spaces among the best in the nation.

English Language Institute available. Learn more: buffalo.edu/eli



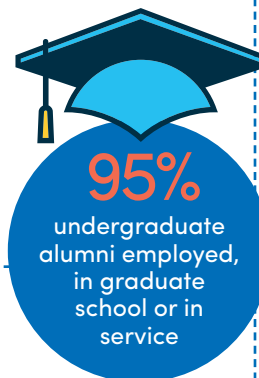
An Inclusive, Welcoming Home

8,000+ students live on campus, in both residence halls and apartment complexes



- 13** Living Learning Communities
- 13** residence halls
- 35** dining locations on campus

Learn more: buffalo.edu/campusliving



IMPRESSIVE OUTCOMES

268,000+ UB alumni in 150 countries and all 50 states

UB grads hired by the most sought-after employers, including Amazon, Apple, Baidu, CannonDesign, Citi, CNN, Deloitte, Ernst & Young, Facebook, Google, HSBC, IBM, ICBC, Intel, KPMG, Microsoft, NASA, NBC Sports, Pepsi, Pfizer, PWC, Samsung, Tav Construction, Tata, Twitter and more.



Apply Now

- UB International Application
- SUNY Application (Buffalo, University at)
- Common Application (SUNY University at Buffalo)
- Coalition Application

Learn more: buffalo.edu/internationaladmissions/apply

ACADEMIC CALENDAR

- Fall Semester: late August to mid-December
- Spring Semester: mid-January to early May

APPLICATION DEADLINES

UB uses rolling admission. There is no specific application deadline; applications are accepted for review until all seats are filled.

RECOMMENDED FILING DATES

- Fall Regular Admission: Feb. 1
- Fall Early Decision: Nov. 15
- Spring Admission: Oct. 1

Admission Requirements

Admission is based on the applicant's academic records:

1 SCHOOL MARKS (GPA)

Freshman: B average, 3.0/4.0 GPA (or equivalent)
Transfer: C+ average, 2.5/4.0 GPA (or equivalent)

2 TEST SCORES (SAT/ACT)

Freshman: Required for direct admission to certain majors; otherwise optional
Transfer: Not required

Learn more: buffalo.edu/internationaladmissions/tests

3 ENGLISH LANGUAGE PROFICIENCY*

TOEFL: 79 iBT[†]
IELTS: 6.5[†]
SAT: 550 (ERWS)[†]
ACT: 20 (English and Reading)[†]

* UB also accepts other English tests.

[†] Applicants with lower scores may be considered for admission.

Learn more: buffalo.edu/internationaladmissions/englishfr

4 PERSONAL ESSAY

5 TEACHER RECOMMENDATIONS

For information about alternative exams, advanced placement, International Baccalaureate, GCE A-level exams and transfer credit, go to taurus.buffalo.edu.